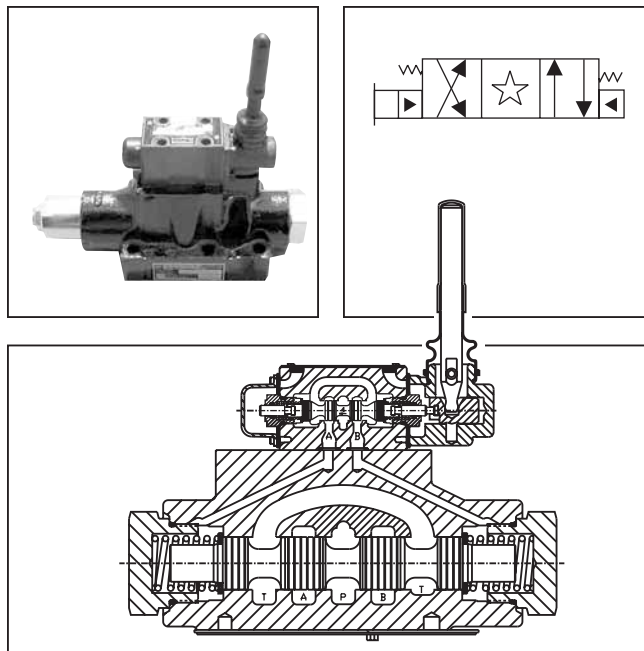


General Description

Series D61VL directional control valves are 5-chamber, lever operated valves. They are available in 2 and 3-position styles. They are manifold or sub-plate mounted valves, which conform to NFPA's D08, CETOP 8 mounting patterns.

Specifications

Mounting Pattern	NFPA D08, CETOP 8, NG25
Max. Operating Pressure	207 Bar (3000 PSI)
Max. Tank Pressure	Internal Drain Model: 34 Bar (500 PSI) External Drain Model: 207 Bar (3000 PSI)
Maximum Drain Pressure	34 Bar (500 PSI)
Maximum Flow	See Reference Data
Pilot Pressure	Oil Min. 6.9 Bar (100 PSI) Oil Max. 207 Bar (3000 PSI)
Response Time	Varies with pilot line size and length, pilot pressure, pilot valve shift time & flow capacity (GPM)



Features

- Low force required to shift spool.
- Hardened spools provide long life.
- Low pressure drop design.

Ordering Information

D

Directional Control Valve

61V

Basic Valve

NFPA D08
CETOP 8

L

Lever Operated Pilot

Spool

Style

Pilot Supply and Drain

Seal

Valve Variations

Design Series

NOTE: Not required when ordering.

Code	Symbol	Code	Symbol
001		008*	
002		009**	
004		011	
		012	

* 008 spool has closed crossover.
** 009 spool has open crossover.

Valve schematic symbols are per NFPA/ANSI standards, providing flow P to A when energizing operator A. Note operators reverse sides for #8 and #9 spools. See installation information for details.

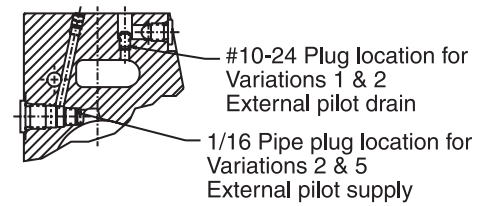
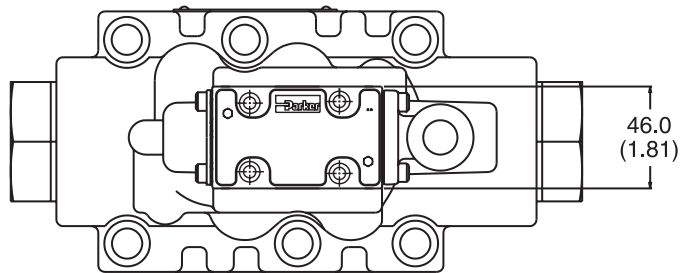
<p>Valve Weight: 12.1 kg (26.7 lbs.)</p> <p>Standard Bolt Kit: BK227</p> <p>Metric Bolt Kit: BKM227</p> <p>Seal Kit:</p> <table style="width: 100%;"> <tr> <td>Nitrile</td><td>SKD61VL</td></tr> <tr> <td>Fluorocarbon</td><td>SKD61VLV</td></tr> </table>	Nitrile	SKD61VL	Fluorocarbon	SKD61VLV	<table border="1" style="width: 100%; border-collapse: collapse;"> <thead> <tr> <th>Code</th><th>Description</th></tr> </thead> <tbody> <tr> <td>1</td><td>Int. pilot/Ext. drain</td></tr> <tr> <td>2</td><td>Ext. pilot/Ext. drain</td></tr> <tr> <td>4#</td><td>Int. pilot/Int. drain</td></tr> <tr> <td>5</td><td>Ext. pilot/Int. drain</td></tr> </tbody> </table> <p># Not available with 002, 008 & 009 spools.</p> <table border="1" style="width: 100%; border-collapse: collapse;"> <thead> <tr> <th>Code</th><th>Description</th></tr> </thead> <tbody> <tr> <td>N</td><td>Nitrile</td></tr> <tr> <td>V</td><td>Fluorocarbon</td></tr> </tbody> </table> <table border="1" style="width: 100%; border-collapse: collapse;"> <thead> <tr> <th>Code</th><th>Description</th></tr> </thead> <tbody> <tr> <td>7</td><td>Pilot Choke – Meter Out</td></tr> <tr> <td>8</td><td>Stroke Adj. 'B' End</td></tr> <tr> <td>9</td><td>Stroke Adj. 'A' End</td></tr> <tr> <td>60</td><td>Pilot Choke – Meter In</td></tr> <tr> <td>89</td><td>Stroke Adj. 'A' & 'B' Ends</td></tr> </tbody> </table> <table border="1" style="width: 100%; border-collapse: collapse;"> <thead> <tr> <th>Code</th><th>Description</th><th>Symbol</th></tr> </thead> <tbody> <tr> <td>B*</td><td>Single operator, 2 position, spring offset. P to A and B to T in offset position.</td><td></td></tr> <tr> <td>C</td><td>Double operator, 3 position, spring centered.</td><td></td></tr> <tr> <td>D*</td><td>Double operator, 2 position, detent.</td><td></td></tr> <tr> <td>E</td><td>Single operator, 2 position, spring centered. P to B and A to T in shifted position.</td><td></td></tr> <tr> <td>H*</td><td>Single operator, 2 position, spring offset. P to B and A to T in offset position.</td><td></td></tr> <tr> <td>K</td><td>Single operator, 2 position. Spring centered. P to A and B to T in shifted position.</td><td></td></tr> </tbody> </table> <p>*Available with 001, 002, 004, 011, 012.</p>	Code	Description	1	Int. pilot/Ext. drain	2	Ext. pilot/Ext. drain	4#	Int. pilot/Int. drain	5	Ext. pilot/Int. drain	Code	Description	N	Nitrile	V	Fluorocarbon	Code	Description	7	Pilot Choke – Meter Out	8	Stroke Adj. 'B' End	9	Stroke Adj. 'A' End	60	Pilot Choke – Meter In	89	Stroke Adj. 'A' & 'B' Ends	Code	Description	Symbol	B*	Single operator, 2 position, spring offset. P to A and B to T in offset position.		C	Double operator, 3 position, spring centered.		D*	Double operator, 2 position, detent.		E	Single operator, 2 position, spring centered. P to B and A to T in shifted position.		H*	Single operator, 2 position, spring offset. P to B and A to T in offset position.		K	Single operator, 2 position. Spring centered. P to A and B to T in shifted position.	
Nitrile	SKD61VL																																																					
Fluorocarbon	SKD61VLV																																																					
Code	Description																																																					
1	Int. pilot/Ext. drain																																																					
2	Ext. pilot/Ext. drain																																																					
4#	Int. pilot/Int. drain																																																					
5	Ext. pilot/Int. drain																																																					
Code	Description																																																					
N	Nitrile																																																					
V	Fluorocarbon																																																					
Code	Description																																																					
7	Pilot Choke – Meter Out																																																					
8	Stroke Adj. 'B' End																																																					
9	Stroke Adj. 'A' End																																																					
60	Pilot Choke – Meter In																																																					
89	Stroke Adj. 'A' & 'B' Ends																																																					
Code	Description	Symbol																																																				
B*	Single operator, 2 position, spring offset. P to A and B to T in offset position.																																																					
C	Double operator, 3 position, spring centered.																																																					
D*	Double operator, 2 position, detent.																																																					
E	Single operator, 2 position, spring centered. P to B and A to T in shifted position.																																																					
H*	Single operator, 2 position, spring offset. P to B and A to T in offset position.																																																					
K	Single operator, 2 position. Spring centered. P to A and B to T in shifted position.																																																					

Bold: Designates Tier I products and options.

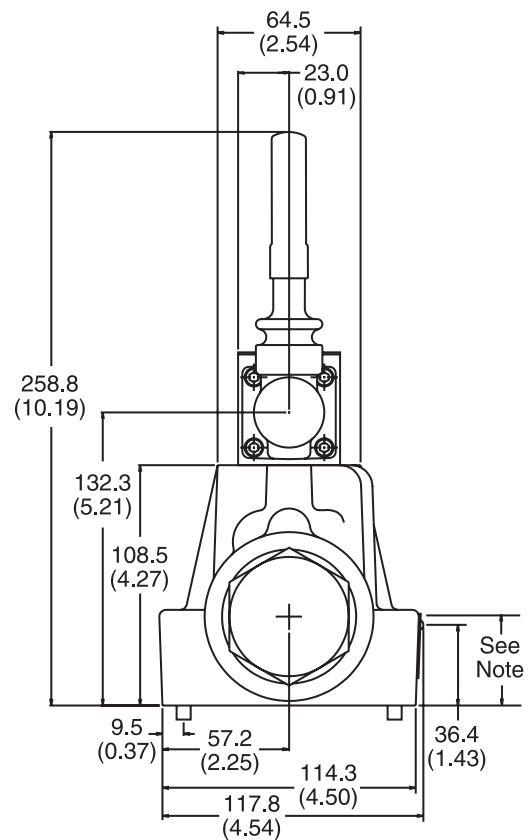
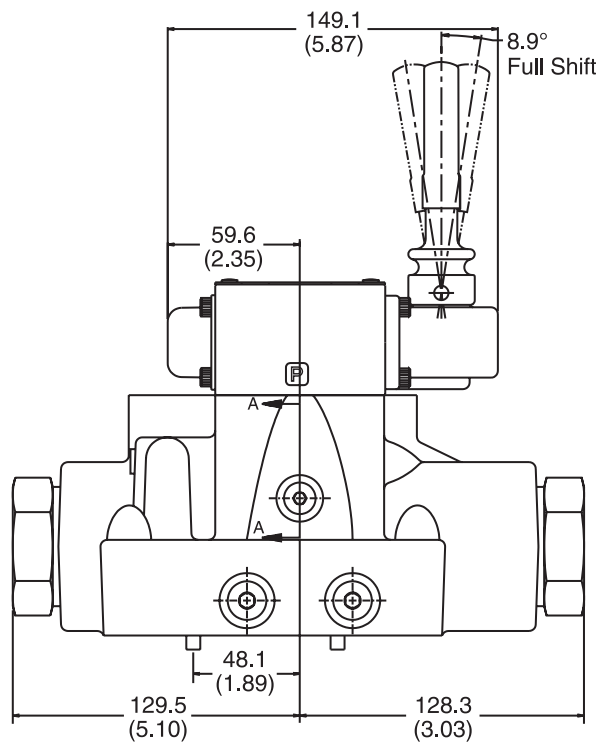
Non-Bold: Designates Tier II products and options. These products will have longer lead times.

D61.indd, dd

Inch equivalents for millimeter dimensions are shown in (**)

A

SECTION A-A



Note: 41.9mm (1.65") from bottom of bolt counterbore.